



Field Experience Specification

Course Title: **Pharmaceutical Industry**

Course Code: **673-PHT-10**

Program: **Pharmaceutical Sciences**

Department: *Enter Department Name .*

College: **Pharmacy**

Institution: **Najran University**

Field Experience Version Number: **1**

Last Revision Date: **20 February 2024**



Table of Contents

A. General information about the course:.....	3
B. Course Learning Outcomes (CLOs), Teaching Strategies and Assessment Methods.....	3
C. Field Experience Administration	5
D. Training Quality Evaluation	7
E. Specification Approval Data	7



A. Field Experience Details:

1. Credit hours: (10).

2. Level/year at which Field Experience is offered: (11).

3. Time allocated for Field Experience activities

(8) Weeks

(42-44) Days

(336-352) Hours

4. Corequisite (or prerequisites if any) to join Field Experience

Complete all program courses

5. Mode of delivery

☒ In-person/onsite

☐ hybrid (onsite/online)

☐ Online

B. Field Experience Course Learning Outcomes (CLOs), Training Activities and Assessment Methods

Code	Learning Outcomes	Aligned PLO Code	Training Activities	Assessment Methods	Assessment Responsibility
1.0	Knowledge and understanding				
1.1	Demonstrate knowledge of physicochemical properties and structural activity relationships for general classes of drugs to serve as a background for drug development process and manufacturing	K3	-Group discussion. -laboratory work.	- Trainee Evaluation Form. - Academic Supervisor site visit report.	-Field Supervisor -Academic Supervisor
2.0	Skills				
2.1	Demonstrate pharmaceutical calculation, formulation, isolation, compounding, and basic drug development skills in relevant pharmacy professions using advanced techniques, tools and instruments	S3	-laboratory work.	- Trainee Evaluation Form.	-Field Supervisor
3.0	Values, autonomy, and responsibility				
3.1	Demonstrate leadership, entrepreneurial and managerial skills, in addition to accountability, confidence,	V4	-Practice session	- Trainee Evaluation Form.	-Field Supervisor



Code	Learning Outcomes	Aligned PLO Code	Training Activities	Assessment Methods	Assessment Responsibility
	reflective reasoning and independent thinking to respond to routine or unanticipated circumstances			- Academic Supervisor site visit report.	-Academic Supervisor

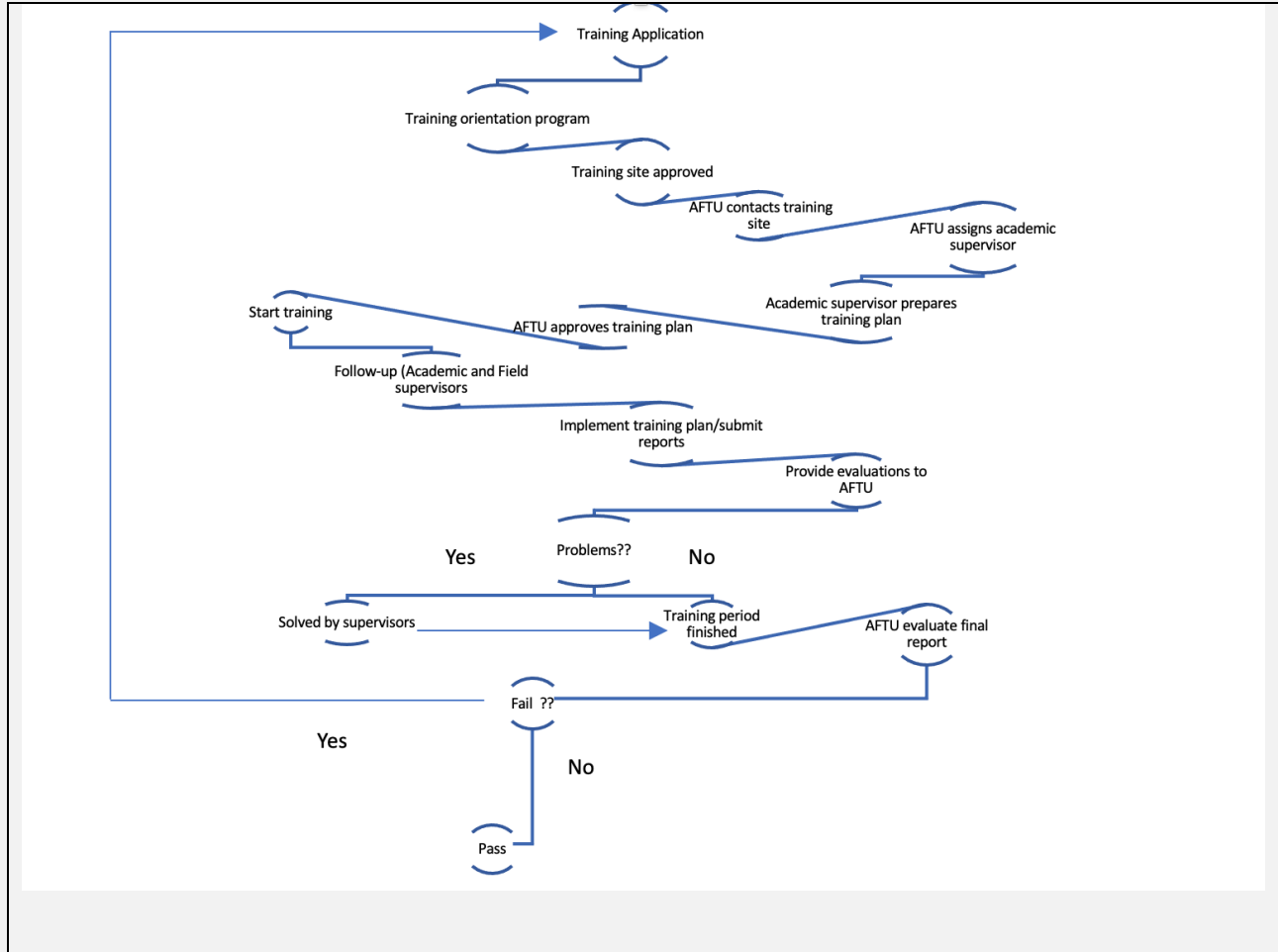
*Assessment methods (i.e., practical test, field report, oral test, presentation, group project, essay, etc.).



C. Field Experience Administration

1. Field Experience Flowchart for Responsibility

Including units, departments, and committees responsible for field experience identifying by the interrelations.



2. Distribution of Responsibilities for Field Experience Activities

Activities	Department or College	Teaching Staff	Student	Training Organization	Field Supervisor
Selection of a field experience site	X	X	X		
Selection of supervisory staff	X				
Provision of the required equipment				X	X
Provision of learning resources	X			X	X
Ensuring the safety of the site				X	X
Commuting to and from the field experience site			X		
Provision of support and guidance	X	X			X

Activities	Department or College	Teaching Staff	Student	Training Organization	Field Supervisor
Implementation of training activities (duties, reports, projects ...)	x			x	
Follow up on student training activities	x	x		x	x
Monitoring attendance and leave		x			x
Assessment of learning outcomes		x			x
Evaluating the quality of field experience		x	x		
Others (specify)					

3. Field Experience Location Requirements

Suggested Field Experience Locations	General Requirements*	Special Requirements**
Pharmaceutical Industry	PC, printer, Internet connection, office Desk, email account or any other relevant office equipment, access to learning resources, approval of emergency leaves, at least 2 appointments with the field supervisor	1. Safe environment for Male/female trainers. 2. Awareness of Ethical Code of Conduct by the company

*E.g. provides information technology, equipment, laboratories, halls, housing, learning sources, clinics ... etc.

** E.g. Criteria of the institution offering the training or those related to the specialization, such as safety standards, dealing with patients in medical specialties ... etc.

4. Decision-Making Procedures for Identifying Appropriate Locations for Field Experience

The training site should be approved by the AFTU.
The Field experience site must be relevant to the student area of study.
The training plan should be aligned with the student area of study. It should not be office desk job.
The Field experience site should be following the governmental rules and regulation for employees.
The training place should have standard working hours, especially for the female trainers.

5. Safety and Risk Management

Potential Risks	Safety Actions	Risk Management Procedures
Training site did not assign suitable field of study related tasks	Suitable selection should be done before the training starts	The academic supervisor will contact the field supervisor and request to change the assigned tasks to IT related tasks. If no response, then the AFTU coordinator will try to resolve the issue with the training site admin. If this did not work, then the AFTU will be requested to transfer the student to another training place.
Students are not accepted for training	The Department, College or the AFTU should provide support for students in selecting training organizations	Find opportunities at any other training site.

D. Training Quality Evaluation

Evaluation Areas/Issues	Evaluators	Evaluation Methods
Trainee academic and professional evaluation	Field Supervisor	Direct Method: Monthly and Final Evaluation using pre-defined Rubrics (Trainee Evaluation Form)
Quality of trainee activities and reports	Academic Supervisor	Direct Method: Monthly and Final Evaluation using pre-defined Rubrics (Academic Supervisor site visit report)
Training Program Learning Experience	Students	Indirect Method: Trainee Satisfaction Survey (Questionnaire to evaluate the effectiveness of field training)

Evaluation areas (e.g., Effectiveness of Training and assessment, Extent of achievement of course learning outcomes, Quality of learning resources, etc.)

Evaluators (Students, Supervisory Staff, Program Leaders, Peer Reviewer, Others (specify))

Assessment Methods (Direct, Indirect)

E. Specification Approval Data

Council /Committee	ALUMNI AND FIELD TRAINING UNIT (AFTU)
Reference No.	14450822-0556-00003
Date	03/03/2024